



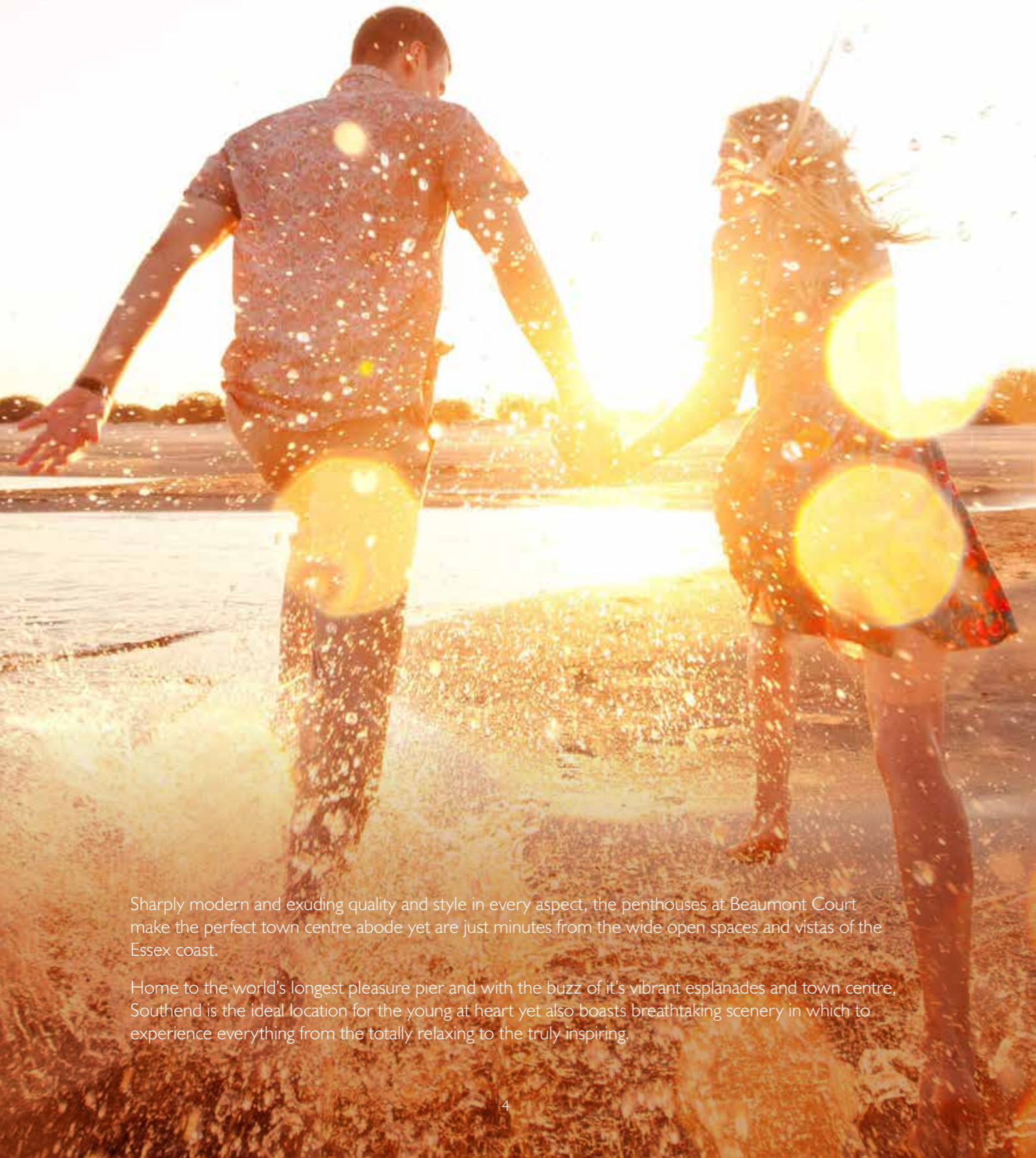
BC BEAUMONT
C O U R T
Penthouse Collection



8 STUNNING PENTHOUSE
SUITES IN A STRIKING
LANDMARK DEVELOPMENT IN
THE HEART OF SOUTHEND

www.beaumontrichmond.co.uk

ENJOY LIFE AT THE TOP

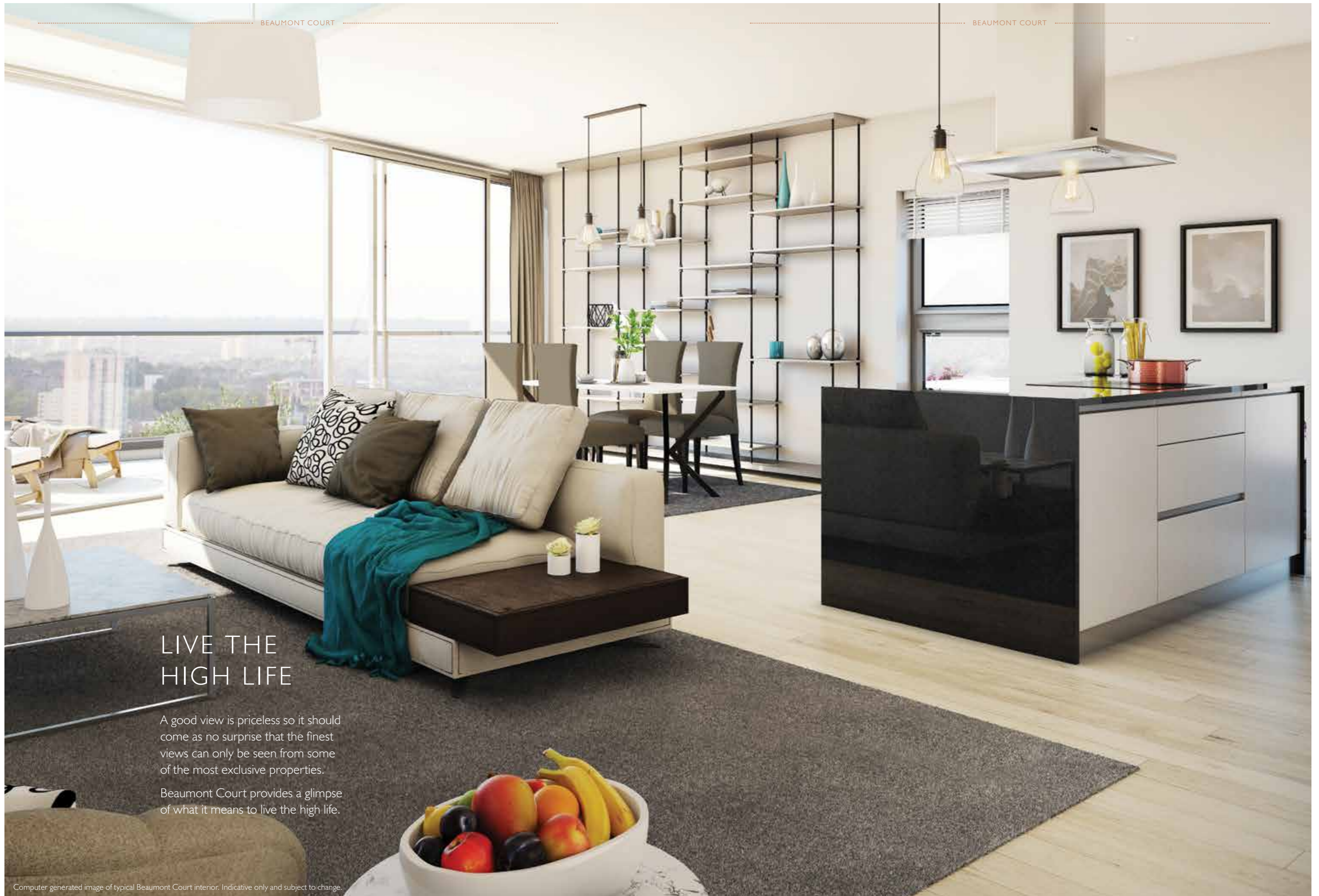


Sharply modern and exuding quality and style in every aspect, the penthouses at Beaumont Court make the perfect town centre abode yet are just minutes from the wide open spaces and vistas of the Essex coast.

Home to the world's longest pleasure pier and with the buzz of its vibrant esplanades and town centre, Southend is the ideal location for the young at heart yet also boasts breathtaking scenery in which to experience everything from the totally relaxing to the truly inspiring.

Designed to complement the striking architecture of Beaumont Court is a contemporary, yet relaxing roof top garden as well as landscaped communal areas. Natural materials fuse with avant garde design to form not only a truly remarkable, but unrivalled residents oasis in the centre of town.





LIVE THE HIGH LIFE

A good view is priceless so it should come as no surprise that the finest views can only be seen from some of the most exclusive properties.

Beaumont Court provides a glimpse of what it means to live the high life.

Computer generated image of typical Beaumont Court interior. Indicative only and subject to change.



Beaumont Court has a high level of specification as well as a range of exclusive residents services:

- Contemporary fitted kitchens with a range of integrated appliances
- Apartments feature stylish fitted bathrooms and en-suites
- Exclusive residents gymnasium
- Exclusive residents rooftop garden
- Concierge service
- Lift access to all floors
- Secure cycle parking

Beaumont Court also has some retail units showcased in its courtyard area.

The first, Beauty by Laser is a luxurious clinic offering a wide variety of cosmetic and beauty treatments. All laser treatments are carried out by Kelli-Anne, who has been providing safe and effective treatments for all skin types for over 18 years.

Beaumont Coffee Club has a menu consisting of light & healthy breakfasts, smoothies, salads, sandwiches, milkshakes and a large selection of homemade cakes and pastries.

All of their ingredients are locally sourced and are vegan, vegetarian and gluten free friendly.

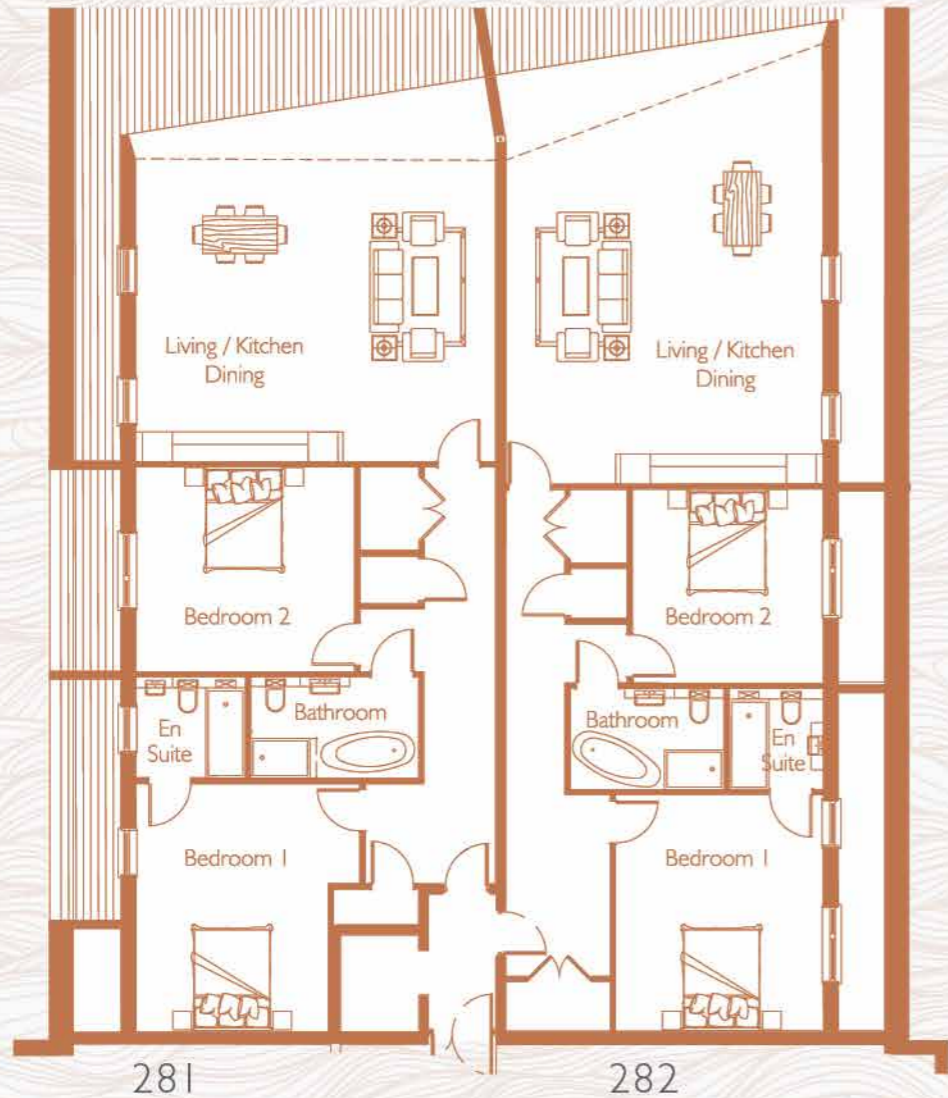


Designed and finished to the highest standards with clean lines and carefully sourced materials.



*Perfect private spaces all designed
to relax and refresh at the end of the day...*

Penthouse 281 & 282



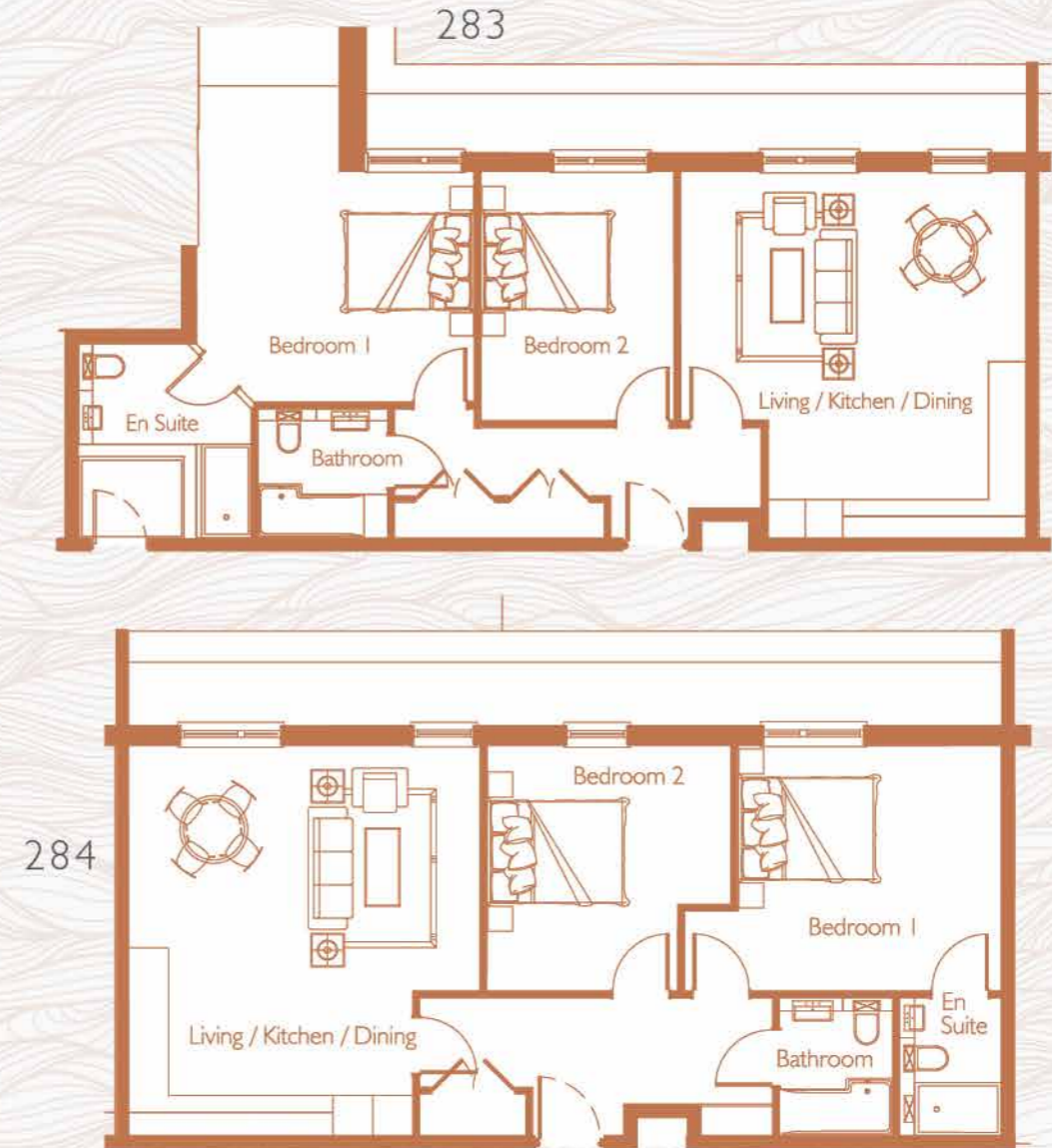
APARTMENT 281:

| | | |
|------------------|--------------|-----------------|
| Hall | 8.40 x 2.62m | 27.72 x 8.646ft |
| Kitchen / Living | 6.10 x 7.25m | 20.13 x 23.92ft |
| Bedroom 1 | 4.51 x 5.00m | 14.88 x 16.50ft |
| Ensuite | 2.20 x 2.03m | 7.26 x 6.99ft |
| Bedroom 2 | 4.41 x 4.12m | 14.55 x 13.59ft |
| Bathroom | 3.39 x 2.05m | 11.18 x 6.76ft |

APARTMENT 282:

| | | |
|------------------|--------------|-----------------|
| Hall | 9.80 x 2.45m | 32.34 x 8.085ft |
| Kitchen / Living | 8.84 x 6.39m | 29.17 x 21.09ft |
| Bedroom 1 | 4.76 x 4.19m | 15.71 x 13.83ft |
| Ensuite | 1.89 x 1.80m | 6.24 x 5.94ft |
| Bedroom 2 | 3.84 x 3.88m | 12.67 x 12.80ft |
| Bathroom | 3.10 x 2.04m | 10.23 x 6.73ft |

Penthouse 283 & 284



APARTMENT 283:

| | | |
|------------------|--------------|-----------------|
| Hall | 5.86 x 1.77m | 19.34 x 5.84ft |
| Kitchen / Living | 5.86 x 5.52m | 19.34 x 18.22ft |
| Bedroom 1 | 4.41 x 3.68m | 14.55 x 12.14ft |
| Ensuite | 3.10 x 2.76m | 10.23 x 9.11ft |
| Bedroom 2 | 3.98 x 3.08m | 13.13 x 10.16ft |
| Bathroom | 2.07 x 2.07m | 6.83 x 6.83ft |

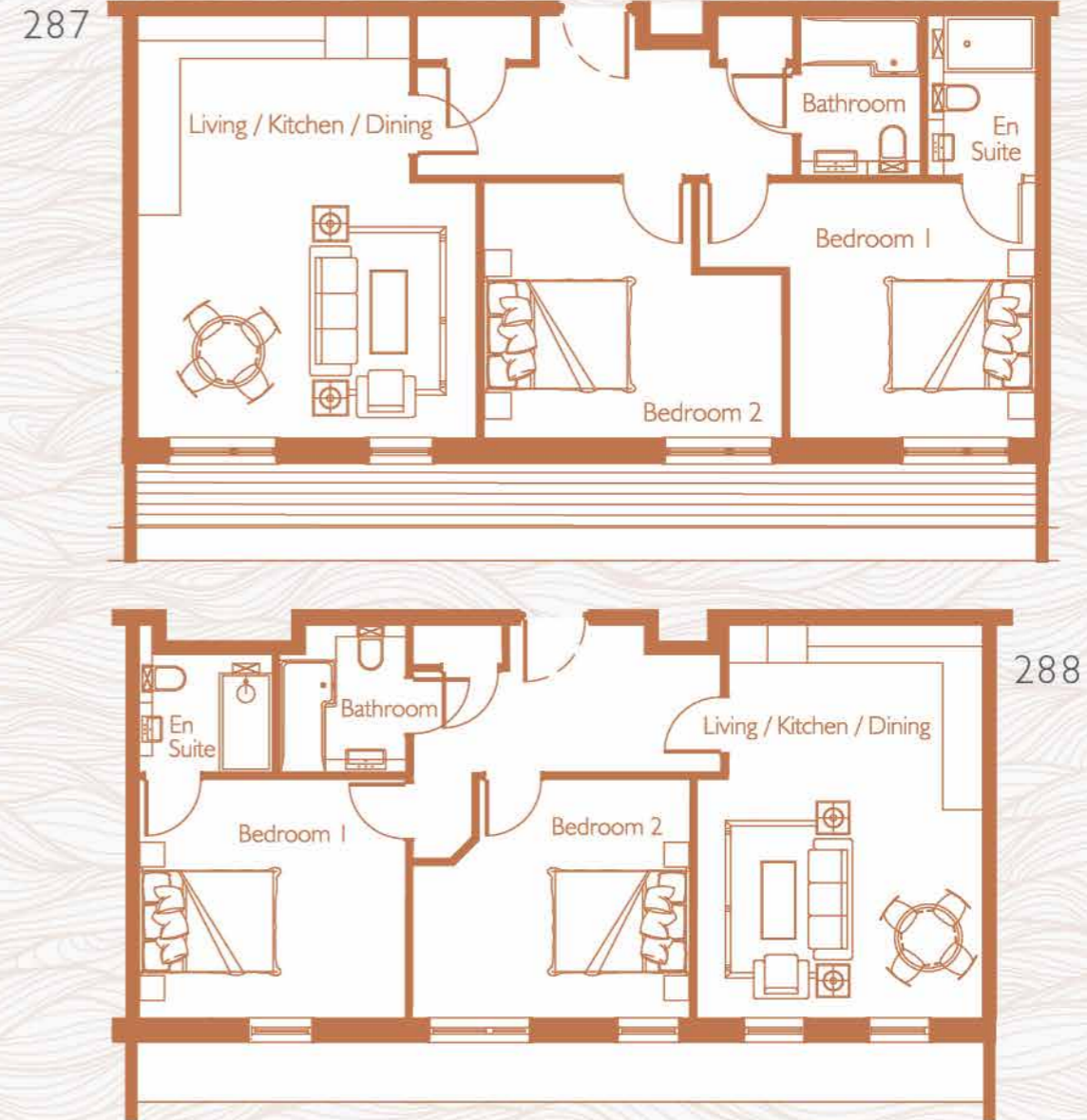
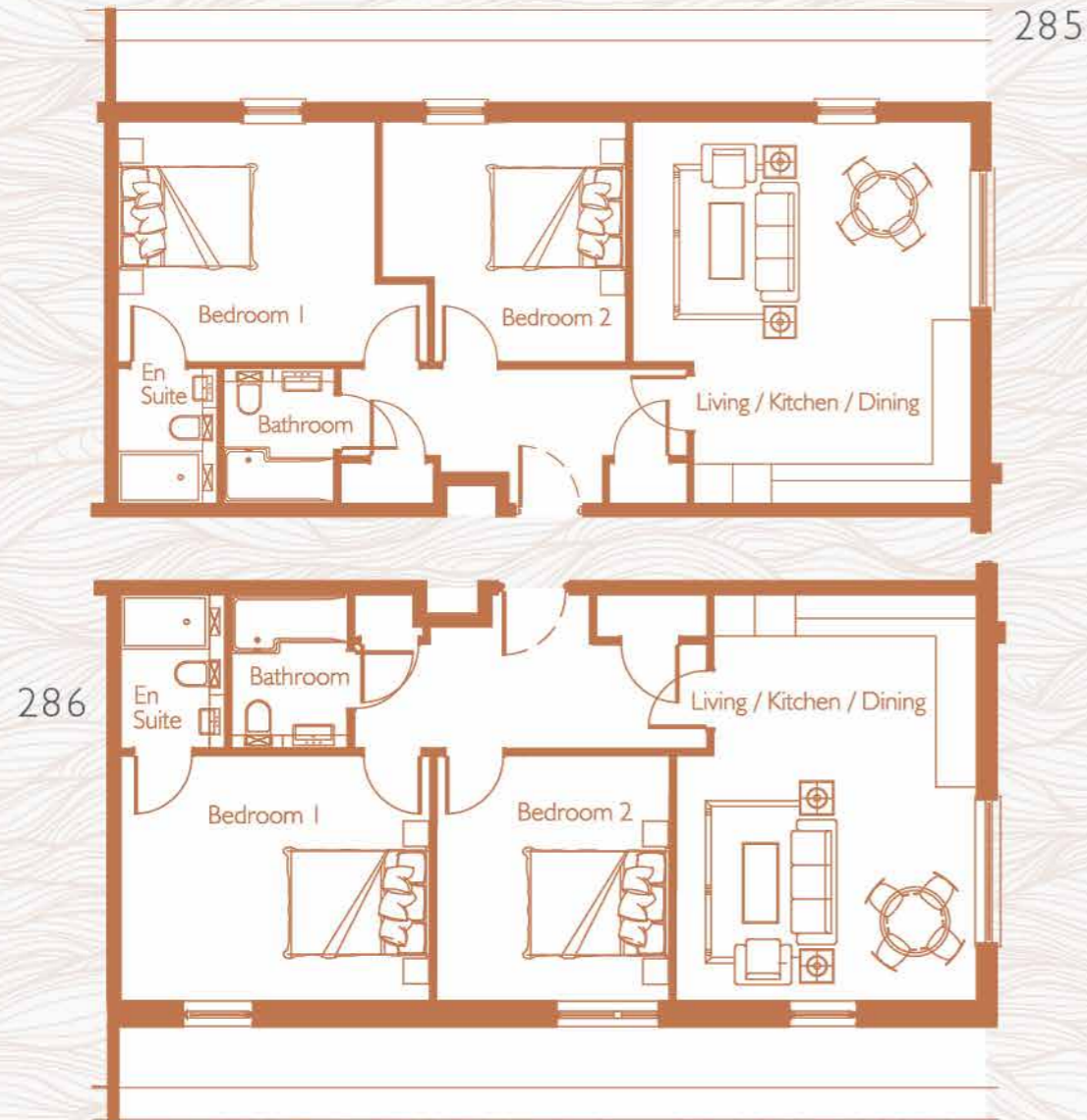
APARTMENT 284:

| | | |
|------------------|--------------|-----------------|
| Hall | 5.30 x 2.07m | 17.49 x 6.83ft |
| Kitchen / Living | 5.86 x 5.29m | 19.34 x 17.46ft |
| Bedroom 1 | 4.75 x 3.66m | 15.68 x 12.08ft |
| Ensuite | 2.07 x 1.52m | 6.83 x 5.02ft |
| Bedroom 2 | 3.68 x 3.66m | 12.14 x 12.08ft |
| Bathroom | 2.07 x 1.70m | 6.83 x 5.61ft |

Whilst these floor plans and measurements have been calculated and prepared with all due care for the convenience of intending purchasers, the information contained herein is a preliminary guide only. Final room dimensions may vary.

Penthouse 285 & 286

Penthouse 287 & 288



APARTMENT 285:

| | | |
|------------------|--------------|-----------------|
| Hall | 5.31 x 2.07m | 17.52 x 6.83ft |
| Kitchen / Living | 5.86 x 5.20m | 19.34 x 17.16ft |
| Bedroom 1 | 4.74 x 3.68m | 15.64 x 12.14ft |
| Ensuite | 2.07 x 1.52m | 6.83 x 5.02ft |
| Bedroom 2 | 3.74 x 3.68m | 12.34 x 12.14ft |
| Bathroom | 2.07 x 1.70m | 6.83 x 5.61ft |

APARTMENT 286:

| | | |
|------------------|--------------|-----------------|
| Hall | 5.16 x 2.25m | 17.03 x 7.43ft |
| Kitchen / Living | 5.96 x 4.40m | 19.67 x 14.52ft |
| Bedroom 1 | 4.52 x 3.62m | 14.92 x 11.95ft |
| Ensuite | 2.25 x 1.52m | 7.43 x 5.02ft |
| Bedroom 2 | 3.62 x 3.40m | 11.95 x 11.22ft |
| Bathroom | 2.25 x 1.70m | 7.43 x 5.61ft |

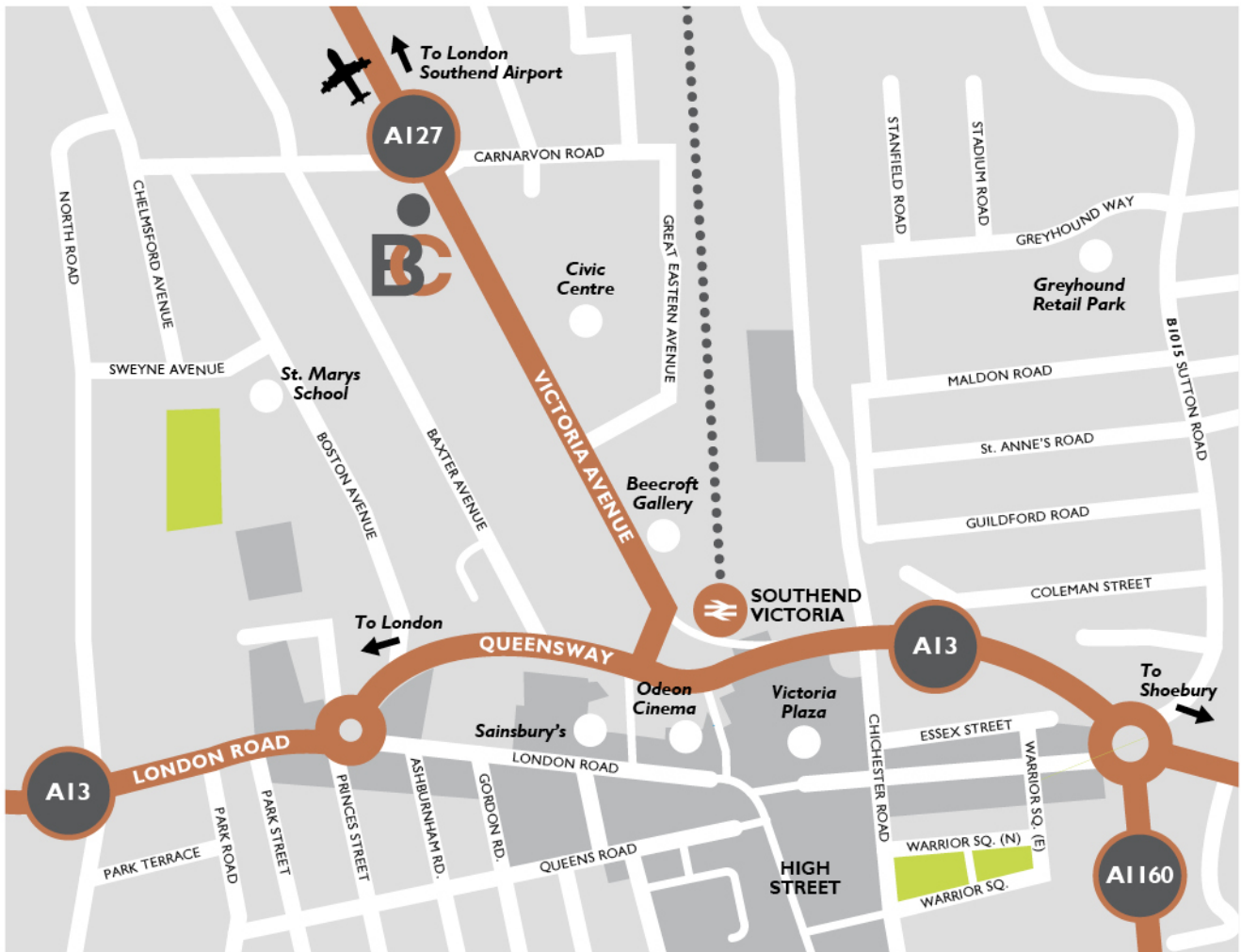
APARTMENT 287:

| | | |
|------------------|--------------|-----------------|
| Hall | 5.30 x 2.25m | 17.49 x 7.43ft |
| Kitchen / Living | 5.98 x 4.78m | 19.73 x 15.77ft |
| Bedroom 1 | 4.75 x 3.62m | 15.68 x 11.95ft |
| Ensuite | 2.25 x 1.52m | 7.43 x 5.02ft |
| Bedroom 2 | 4.21 x 3.62m | 13.89 x 11.95ft |
| Bathroom | 2.25 x 1.07m | 7.43 x 5.61ft |

APARTMENT 288:

| | | |
|------------------|--------------|-----------------|
| Hall | 4.66 x 2.25m | 15.38 x 7.43ft |
| Kitchen / Living | 5.98 x 4.32m | 19.73 x 14.26ft |
| Bedroom 1 | 4.03 x 3.62m | 13.30 x 11.95ft |
| Ensuite | 2.01 x 1.78m | 6.63 x 5.87ft |
| Bedroom 2 | 4.19 x 3.62m | 13.83 x 11.95ft |
| Bathroom | 2.25 x 1.89m | 7.43 x 6.24ft |

Whilst these floor plans and measurements have been calculated and prepared with all due care for the convenience of intending purchasers, the information contained herein is a preliminary guide only. Final room dimensions may vary.



BEAUMONT COURT

Victoria Avenue
 Southend on Sea
 SS2 6EB

For further information visit
www.beaumontrichmond.co.uk

email
info@beaumontrichmond.co.uk

Or contact the selling agent



haart
 01702 342193



Buy your dream home
 with just 5% deposit
 Terms and conditions apply

A development by



RANDALL | WATTS

